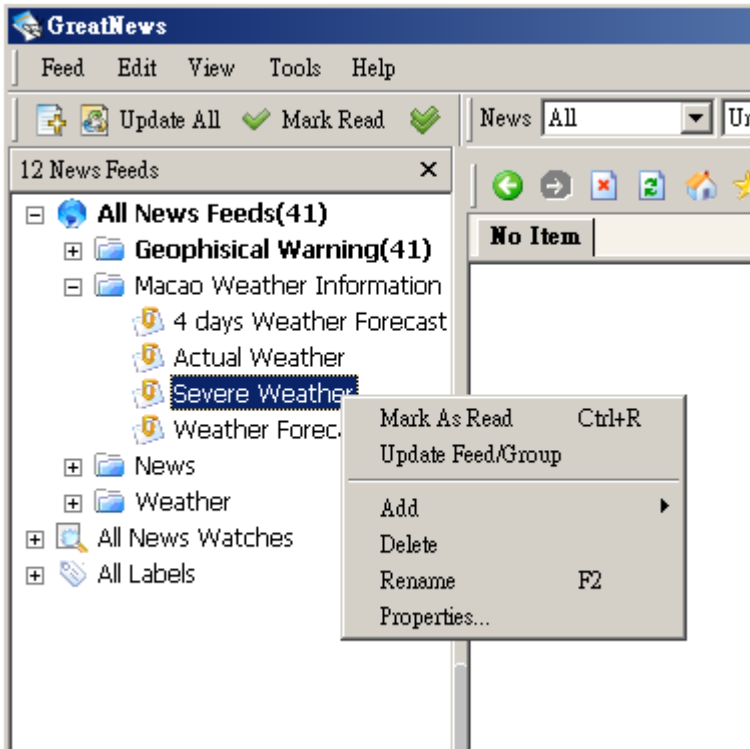
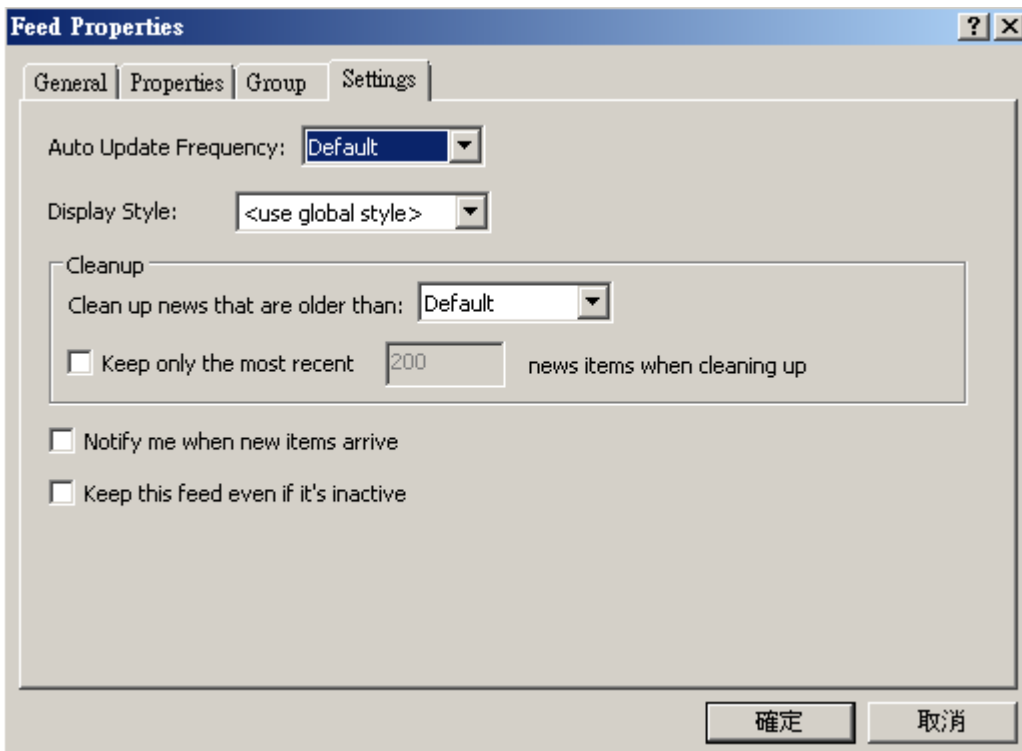


HOW TO SETUP UPDATE INTERVAL in GreatNews

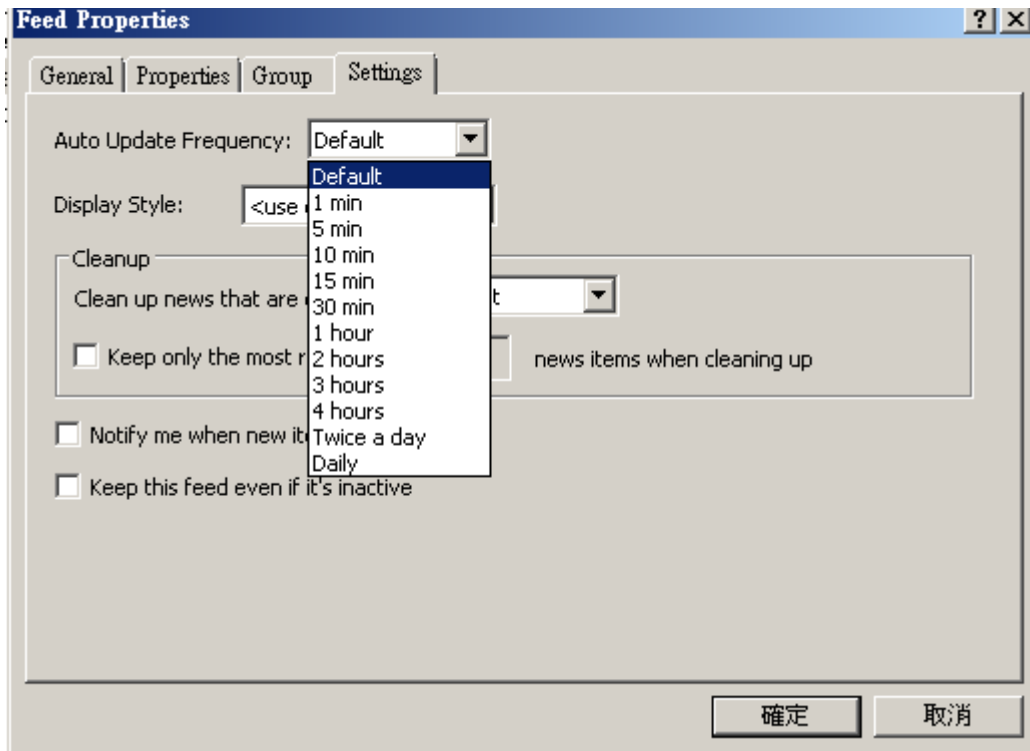
- 1) Open GreatNews,
- 2) Select related feed, for example “Severe Weather”,
- 3) Right Click on the feed and select “Properties”:



- 4) Select “Settings”:



5) Select the update interval in “Auto Update Frequency”:



Remark: For SMG’s Warning Message, we recommend to set feeds to update about 5 minutes, for other weather information, like Weather forecast, Actual weather etc., the update interval should be longer.